



The Knightstown Kingstone Grange
Kingstone, Hereford, Herefordshire, HR2 9HJ

jackson
property

£340,000

**** 4 BEDROOMS * OPEN PLAN KITCHEN DINER PLUS TWO FURTHER RECEPTION ROOMS ****

4 Bedroom detached house with wardrobe and en suite to master bedroom and bedroom 2, wardrobe in bedroom 4, study, open plan kitchen / dining room with French doors onto garden, bay window to lounge, utility room.

Single garage and parking

Situation

Situated on the borders of the Golden Valley, just over six miles west of the cathedral city of Hereford, and easily accessible to the market town of Ross-on-Wye and Abergavenny.

Kingstone boasts a range of excellent amenities including doctor's surgery, public house, general stores, post office, church and excellent schooling - The Academy Trust comprises primary school and high school and is only a few minutes' walk from the development.

Hereford city provides the main shopping location with major retailers to include Waitrose and Debenhams. There are numerous restaurant and leisure facilities to enjoy such as leisure pool, cinema and bowling, together with countryside walks, particularly at The Brecon Beacons National Park, only a few miles to the south west.

Kingstone is only approximately 18 miles away from the M50 motorway

which connects to the M5 and the Midlands. There is also a bus service which runs from Kingstone into Hereford and the city is home to a railway station with major rail links.

Description

4 Bedroom detached house with 2 en-suites and single garage.

This property truly is a must view. Available with help to buy and Part Exchange considered.

The sales office is open on site from Friday to Sunday by appointment only. Please call 01432 344779 to arrange a time.

Dimensions

First Floor

Bedroom 1: 3.52 x 3.45m 11'5" x 11'3"

Bedroom 2: 2.75 x 3.04m 9'0" x 9'9"

Bedroom 3: 2.90 x 2.91m 9'5" x 9'5"

Bedroom 4: 2.29 x 2.91m 7'5" x 9'5"

Ground Floor

Living Room: 3.52 x 5.24m 11'5" x

17'1"

Kitchen/Dining: 6.01 x 3.58m 19'7" x 11'7"

Utility: 1.69 x 2.33m 5'5" x 7'6"

Study: 2.59 x 3.04m 8'4" x 9'9"

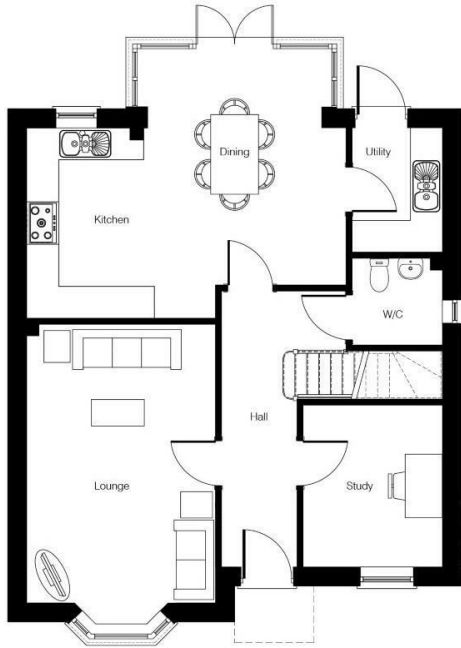
Lagan Homes

Established in 1983 Lagan Homes has three companies, operating in both Northern Ireland, the Republic of Ireland and England. Lagan Homes is at the forefront of high quality homebuilding and collectively develops over 400 homes per annum with a significant land bank and interests in strategic land.

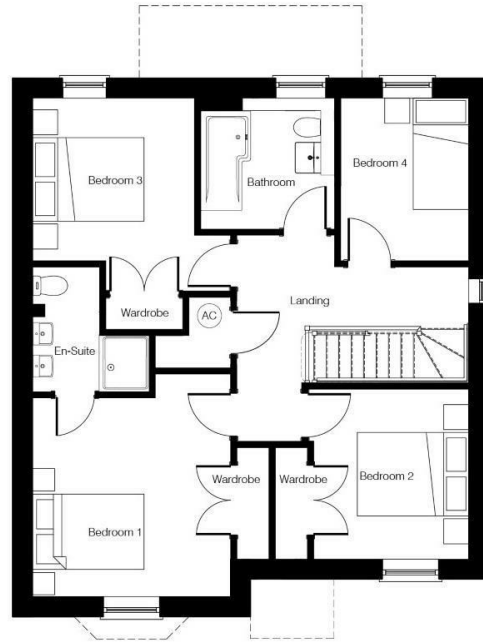
Lagan Homes are a 5 Star Home Buildings Federation developer winning The Best Residential Development in Herefordshire.



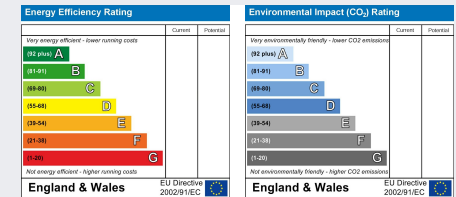
To arrange a viewing please contact us on t. 01432 344 779
hereford@bill-jackson.co.uk | www.bil-jackson.co.uk



Ground Floor



First Floor



jackson
property

Address: 45 Bridge Street
Hereford
HR4 9DG

Tel: 01432 344 779
Email: hereford@bill-jackson.com
Web: www.bill-jackson.com

JACKSON PROPERTY for themselves and the vendors of the property, whose agents they are, give notice that these particulars, although believed to be correct, do not constitute any part of an offer of contract, that all statements contained in these particulars as to this property are made without responsibility and are not to be relied upon as statements or representations of fact and that they do not make or give any representation or warranty whatsoever in relation to this property. Any intending purchaser must satisfy himself by inspection or otherwise as to the correctness of each of the statements contained in these particulars.

