



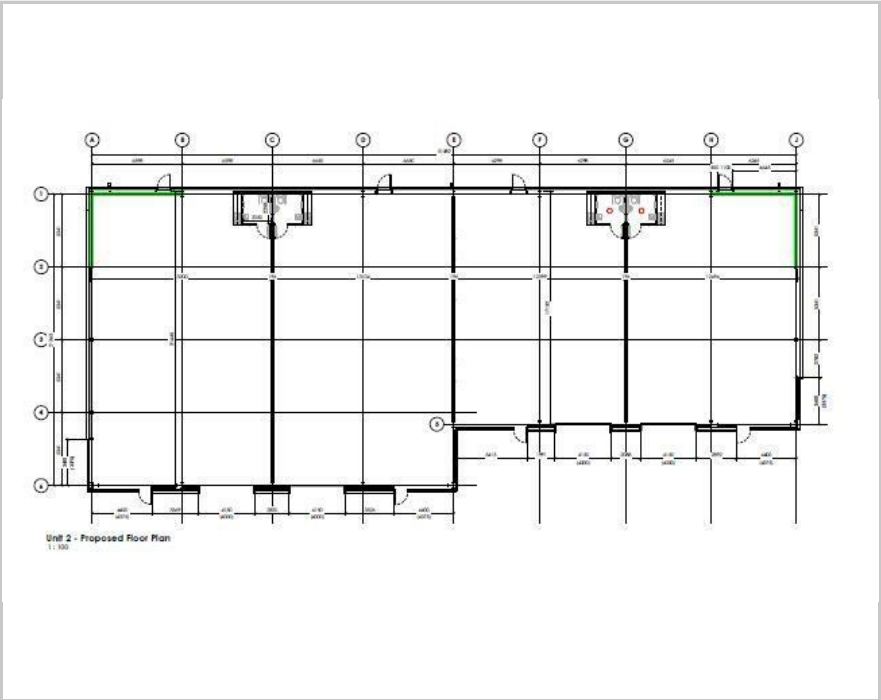
Unit 16 Skylon Park, Hereford, HR2 6JH

Guide Price + vat £259,400





Floor Plan



Area Map



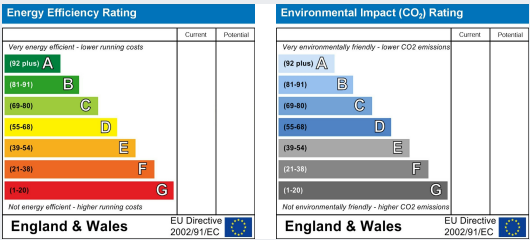
Accommodation

- Brand New Units with Parking
- Available from Q1 2019
- Unit 16 is 2294 sq.ft
- Can purchase multiple units and merge
- Suitable for Class B1, B2 & B8
- For Sale / To Let
- Estate Service Charge Applicable
- 999 Year Leasehold

Viewing

Please contact our Hereford Office on 01432 344 779 if you wish to arrange a viewing appointment for this property or require further information.

Energy Efficiency Graph



Jackson International - for themselves and the owners/landlords of the property, whose agents they are, give notice that these particulars, although believed to be correct, do not constitute any part of an offer of contract, that all statements contained in these particulars as to this property are made without responsibility and are not to be relied upon as statements or representations of fact and that they do not make or give any representation or warranty whatsoever in relation to this property. Any intending purchaser/tenant must satisfy himself by inspection or otherwise as to the correctness of each of the statements contained in these particulars.