



Property Features

- Detached Bungalow
- Located in Great Kingshill
- Offering no Onward Chain
- 3/4 Good sized Bedrooms
- 1/2 Reception Rooms
- Kitchen/Breakfast Room
- Great Sized Rear Garden
- Good sized Front Garden for Parking
- Catchment of popular Schools
- EPC Rating: E

Full Description

A 3/4 Bedroom detached bungalow that offers no onward chain. The property does require some general updating but offers a wealth of potential to make in to a larger home (STPP). The property is located in this popular South Buckinghamshire village of Great Kingshill and is within catchment of sought after local schools.

Accommodation

Entrance Hall, Large Living Room, Kitchen/Breakfast Room, Dining Room/4the Bedroom, 3 Further Bedrooms, Bathroom and separate Cloakroom.

**** Agents Note**** Main services of Water, Electricity and Gas are connected, but the foul drainage is conducted to a septic tank on the adjoining property 'Awali'. For further details please call Kingshills Estate Agents.

Outside

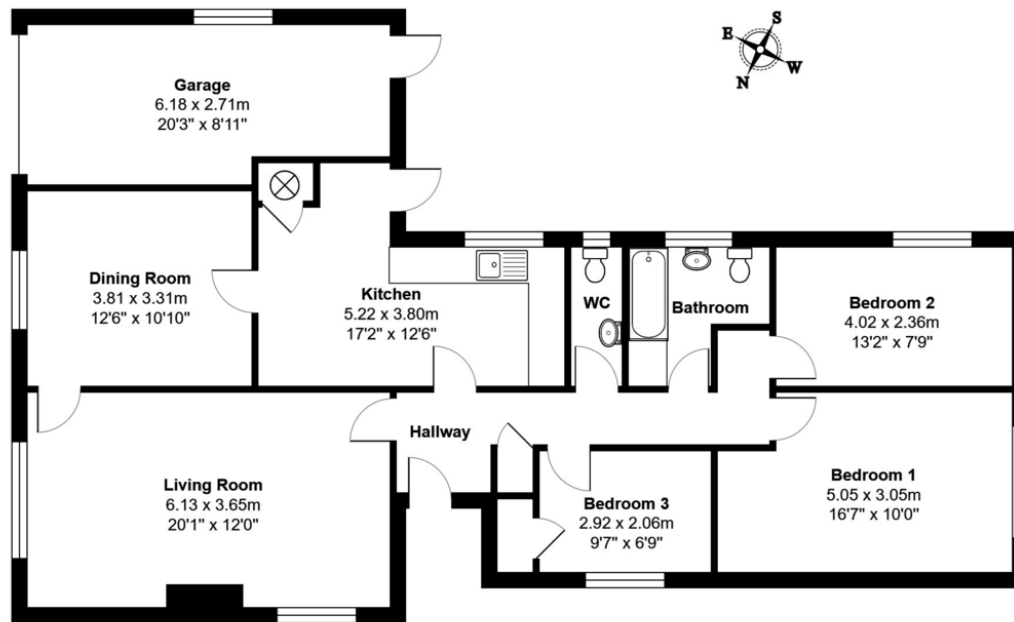
The rear garden is of good size backing on to paddocks and enclosed by fencing and hedging, there is a large patio to the side of the property and access to the

front where there is a driveway that serves the garage and parking.





Approx. Total Area: 117.0 m² ... 1259 ft²



Whilst every attempt has been made to ensure the accuracy of the floorplans contained here, measurements of doors, windows and rooms are approximate and no responsibility is taken for any error, omission or mis-statement. These plans are for representation purposes only.

Aston Court
Kingsmead Business Park
High Wycombe
Buckinghamshire
HP11 1JU

01494 939868
hello@kingshills.co.uk
kingshills.co.uk

Agents Note: Whilst every care has been taken to prepare these particulars, they are for guidance purposes only. All measurements are for general guidance purposes only and whilst every care has been taken to ensure accuracy, they should not be relied upon and potential buyers/tenants are advised to recheck the measurements