



exceptional service as standard.

01494 939868

hello@kingshills.co.uk

kingshills.co.uk



Dolphin Court | Kingsmead Road | High Wycombe | HP11 1XE

Asking Price Of | £215,000

Property Features

- Dolphin Court Development
- Stunning Communal Gardens
- Gym and Swimming Pool
- Double Bedroom with built in Wardrobes
- Living Room with Dining/Study Area
- Fitted Kitchen with appliances
- Bathroom
- Covered Balcony over looking the Gardens
- Allocated Parking
- EPC

Full Description

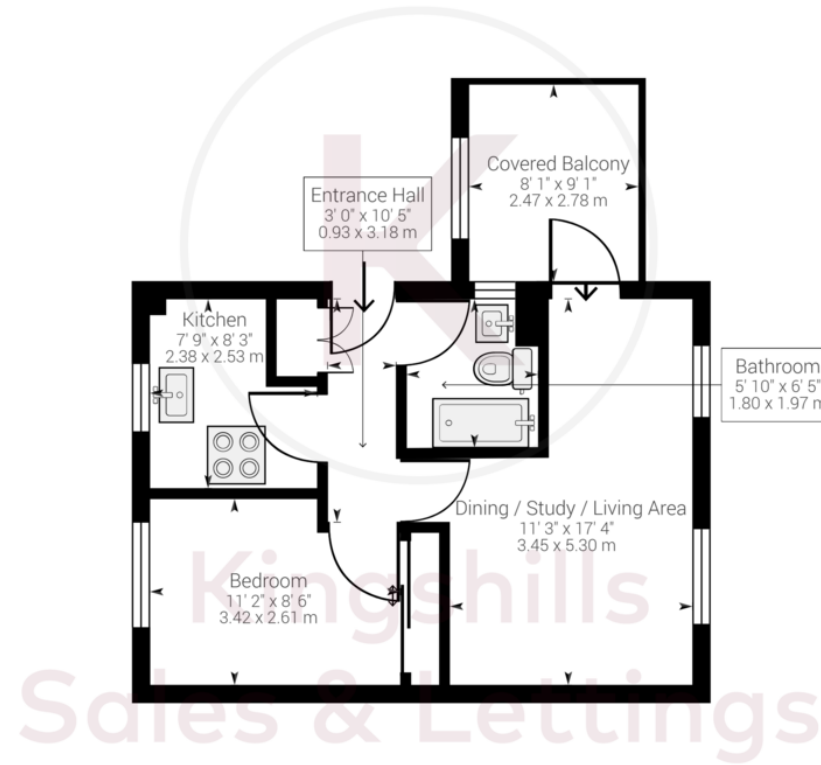
Dolphin Court has been regarded as one of the most prestigious developments since it was built in the 1980's. The stunning communal gardens are manicured to an extremely high standard and is a great place to relax and take in the stunning surroundings which include a large pond with coy carp and a water fountain. The development also boasts and exclusive Gymnasium and Swimming Pool for use solely for the residents.

Accommodation

Entrance via a security Entry Phone System, Entrance Hall, Living Room with Dining/Study Area, Fitted Kitchen, Double Bedroom with Built in Wardrobes, Bathroom, Covered Veranda overlooking the Stunning Communal Gardens, Allocated parking.







Approximate net internal area: 422.11 ft² (496.50 ft²) / 39.22 m² (46.13 m²)
 While every attempt has been made to ensure accuracy, all measurements are approximate, not to scale. This floor plan is for illustrative purpose only and should be used as such by any prospective tenant or purchaser.

Powered by Giraffe360

Aston Court
 Kingsmead Business Park
 High Wycombe
 Buckinghamshire
 HP11 1JU

01494 939868
 hello@kingshills.co.uk
 kingshills.co.uk

Agents Note: Whilst every care has been taken to prepare these particulars, they are for guidance purposes only. All measurements are for general guidance purposes only and whilst every care has been taken to ensure accuracy, they should not be relied upon and potential buyers/tenants are advised to recheck the measurements