



exceptional service as standard.

01494 939868

hello@kingshills.co.uk

kingshills.co.uk



91 Brackley Road | Hazlemere | High Wycombe | HP15 7EY

Asking Price Of | £385,000

---

## Property Features

- Stunning Non Estate Home
- Holmer Green side of Hazlemere
- Catchment of Highly Regarded Schools
- 3 Double Bedrooms
- Refitted Kitchen/Breakfast Room
- Modern Family Bathroom
- Living Room with Ornamental Fireplace
- Double Glazing and Gas Radiator Heating
- Parking to the Rear
- EPC:

---

## Full Description

A lovely non estate Terraced Home located on the Holmer Green Side of Hazlemere and within Catchment of the Highly Regarded Local Schools. The property has been upgraded in many ways by the present owners and now offers comfortable modern living.

### Accommodation

Entrance Hall, Living Room with Ornamental Fireplace, Modern and Refitted Kitchen Breakfast Room with Fitted Appliances, 3 Double Bedrooms and refitted Family Bathroom, Enclosed Rear Gardens and Parking to the rear.

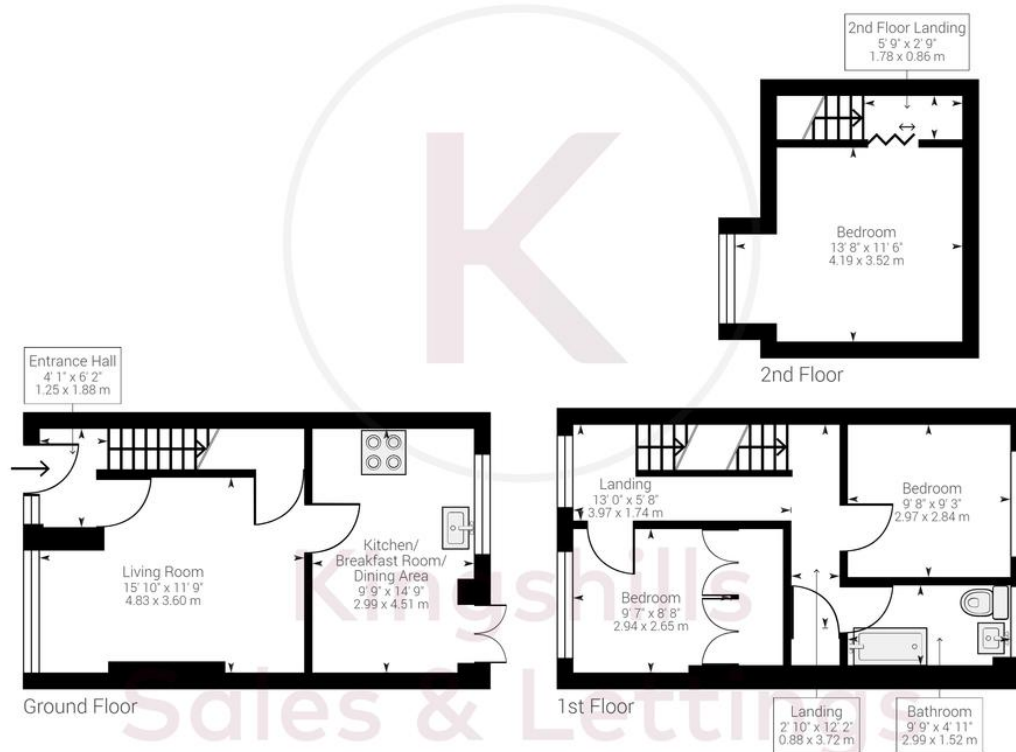
### Location

Ideal for families, Hazlemere is situated just 2 miles north of High Wycombe. It has well regarded schools for both primary and secondary age ranges, along with great amenities. Shops, pubs and cafes as well as easy links to both High Wycombe and Amersham for London Train services make Hazlemere a fantastic base for commuters, whilst the M40 can be accessed at Junction 3 for both London and Birmingham. This

village offers a wonderful mid-point between town and country being surrounded by beautiful open countryside and woodland close by.







Approximate net internal area: 905.13 ft<sup>2</sup> / 84.09 m<sup>2</sup>  
 While every attempt has been made to ensure accuracy, all measurements are approximate, not to scale. This floor plan is for illustrative purpose only and should be used as such by any prospective tenant or purchaser.

Powered by Giraffe360

Aston Court  
 Kingsmead Business Park  
 High Wycombe  
 Buckinghamshire  
 HP11 1JU

01494 939868  
 hello@kingshills.co.uk  
 kingshills.co.uk

Agents Note: Whilst every care has been taken to prepare these particulars, they are for guidance purposes only. All measurements are for general guidance purposes only and whilst every care has been taken to ensure accuracy, they should not be relied upon and potential buyers/tenants are advised to recheck the measurements