



exceptional service as standard.

01494 939868

hello@kingshills.co.uk

kingshills.co.uk



9 Firs Close | Hazlemere | High Wycombe | HP15 7TF

Asking Price Of | £365,000

Property Features

- Mid Terrace Family Home
- Catchment of the Manor Farm Schools
- 3 Good sized Bedrooms
- Large Living Room/Dining Room
- Refitted Kitchen with Utility area
- Walkway Location
- Low maintenance Garden
- Double Glazing and Gas Rad Heating
- Driveway and Garage
- EPC:D

Full Description

A lovely mid terraced family home located on the ever popular Manor Farm development and in a quiet walkway position. This home is also within catchment of the ever popular Manor Farm Schools and within a close proximity to shops and amenities. Also benefitting from Double Glazing and Gas Radiator Heating.

The accommodation comprises:

Large Living Room/Dining Room, Refitted Kitchen with Utility Area, 3 good sized bedrooms to the first floor and family bathroom. The Rear Gardens are all Patio with fencing for a high degree of privacy with Garage and Driveway located at the rear of the property.

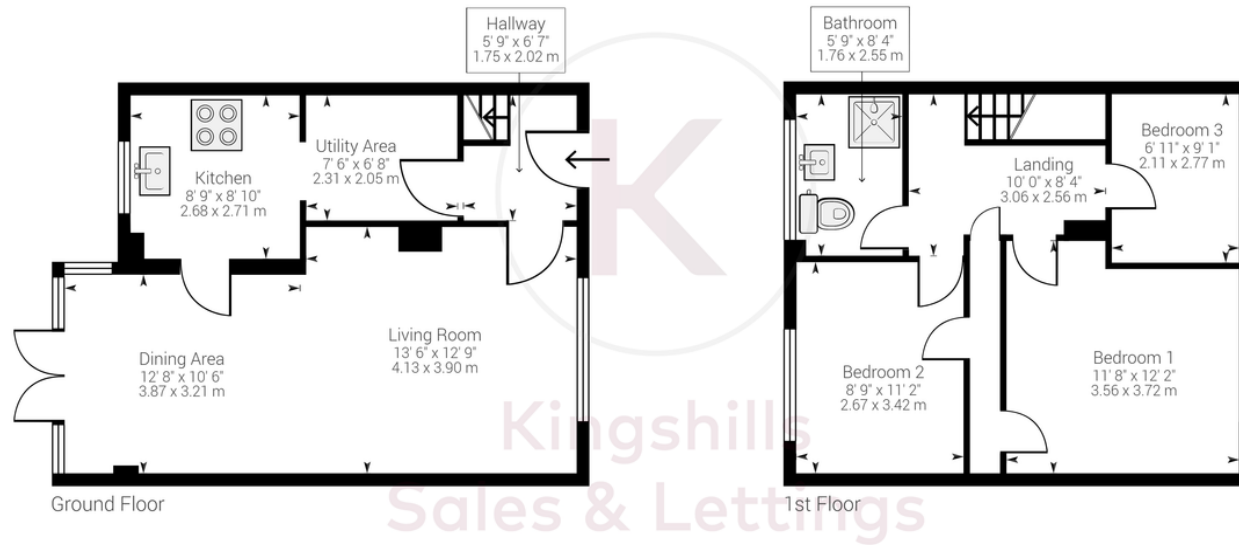
Hazlemere

Ideal for families, Hazlemere is situated just 2 miles north of High Wycombe. It has well regarded schools for both primary and secondary age ranges, along with great amenities. Shops, pubs and cafes as well as easy links to both High Wycombe and Amersham for London Train services make Hazlemere a fantastic base for commuters, whilst the M40 can be accessed at

Junction 3 for both London and Birmingham. This village offers a wonderful mid-point between town and country being surrounded by beautiful open countryside and woodland close by.







Approximate net internal area: 902 ft² / 83.79 m²
 While every attempt has been made to ensure accuracy, all measurements are approximate, not to scale. This floor plan is for illustrative purpose only and should be used as such by any prospective tenant or purchaser.

Powered by Giraffe360

Aston Court
 Kingsmead Business Park
 High Wycombe
 Buckinghamshire
 HP11 1JU

01494 939868
 hello@kingshills.co.uk
 kingshills.co.uk

Agents Note: Whilst every care has been taken to prepare these particulars, they are for guidance purposes only. All measurements are for general guidance purposes only and whilst every care has been taken to ensure accuracy, they should not be relied upon and potential buyers/tenants are advised to recheck the measurements