



exceptional service as standard.

01494 939868

lettings@kingshills.co.uk

kingshills.co.uk



Kingsmead Road | High Wycombe | HP11 1JB

Prices Range from £900 to £1,350 pcm

Property Features

- BRAND NEW DEVELOPMENT
- Open Day Saturday 31st October
- One and Two-Bedroom Apartments
- High Specification Finish
- Spacious and Modern Apartments
- Undercover Parking
- Sought After Location
- Viewing Highly Recommend
- Furnished Option Available
- Move in Before Christmas

Full Description

We are delighted to offer to the market this brand-new development which consists of just 18 apartments. This newly constructed development has been finished to a high standard and offers spacious and modern living. Each apartment offers light and airy accommodation, a balcony, Bosch appliances and undercover parking. The two-bedroom apartments boast an en-suite shower room.

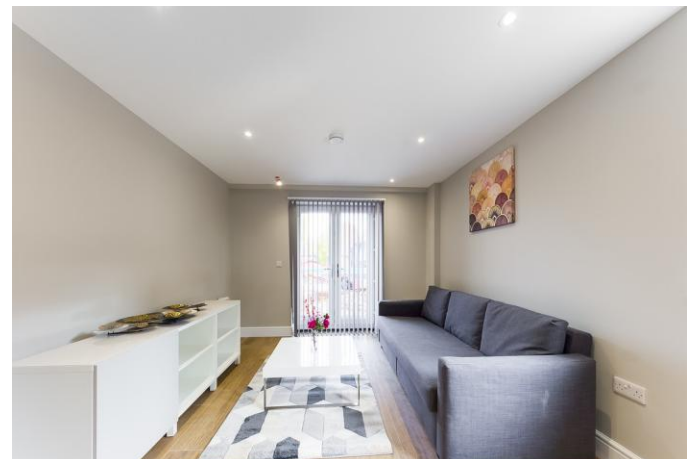
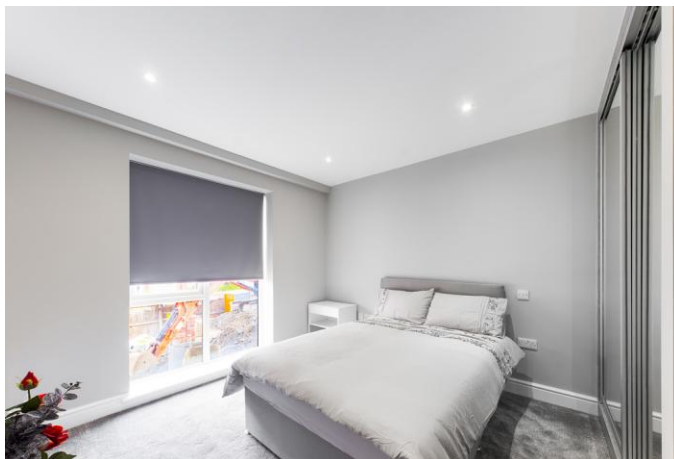
The apartments are situated in a sought-after location to the east-side of High Wycombe which offers easy access to Junction 3 of the M40 motorway, High Wycombe town centre and Beaconsfield. The development is also just a short walk from Kingsmead Park.

Please call to register your interest, viewings will be carried out during the open house on 31st October 2020. Viewings are strongly recommended to avoid disappointment.

Prices for the 1-bedroom apartments range from £900-£1000pcm

Prices for the 2-bedroom apartments range from £1200-£1350pcm







Whilst every attempt has been made to ensure the accuracy of the floor plans contained here, measurements of doors, windows and rooms are approximate and no responsibility is taken for any error, omission or mis-statement. These plans are for representation purposes only.

Aston Court
Kingsmead Business Park
High Wycombe
Buckinghamshire
HP11 1JU

01494 939868
lettings@kingshills.co.uk
kingshills.co.uk

Agents Note: Whilst every care has been taken to prepare these particulars, they are for guidance purposes only. All measurements are for general guidance purposes only and whilst every care has been taken to ensure accuracy, they should not be relied upon and potential buyers/tenants are advised to recheck the measurements