

exceptional service as standard.

01494 939868

lettings@kingshills.co.uk

kingshills.co.uk



152 London Road | High Wycombe | HP11 1DQ

£1,600 pcm

Property Features

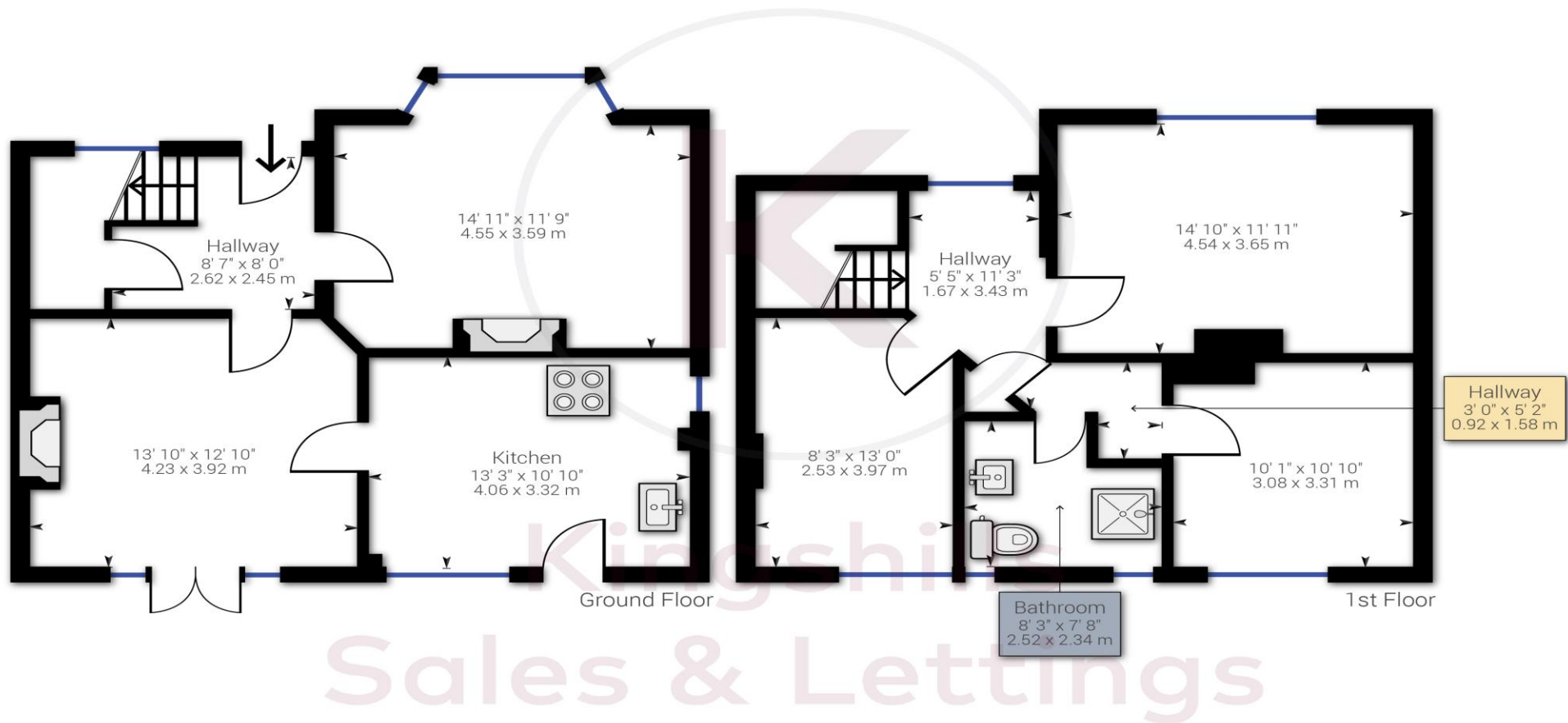
- Substantial Three Bedroom Property
- Recently Refurbished
- Modern with Character Features
- Two Reception Rooms with Open Fires
- Parking for 2 Cars
- Garden Office
- Three Double Bedrooms with Fitted Wardrobes
- Within Walking Distance of The Town Centre
- Southerly Facing Garden

Full Description

A beautifully presented three-bedroom property which is located within a short walk of High Wycombe town centre, offering convenient access to local amenities and the train line which goes into London Marylebone. The property has been vastly improved and offers modern living with the benefit of character features such as wooden beams and open fires. Internally, the accommodation comprises; large entrance hall with storage; living area with wood-burner; second lounge/snug with open fire; large kitchen with a range of appliances. Upstairs offers 3 double bedrooms, all with fitted wardrobes and an impressive shower room. The external of the property offers driveway parking for 2 cars to the front and the rear of the property offers a large garden with a summer house with power, perfect for a home office. Available NOW on an unfurnished basis. Internal viewing highly recommended.







Approximate net internal area: 1129.98 ft² / 104.98 m²

While every attempt has been made to ensure accuracy, all measurements are approximate, not to scale. This floor plan is for illustrative purpose only and should be used as such by any prospective tenant or purchaser.

Powered by Giraffe360

Aston Court
Kingsmead Business Park
High Wycombe
Buckinghamshire
HP11 1JU

01494 939868
lettings@kingshills.co.uk
kingshills.co.uk

Agents Note: Whilst every care has been taken to prepare these particulars, they are for guidance purposes only. All measurements are for general guidance purposes only and whilst every care has been taken to ensure accuracy, they should not be relied upon and potential buyers/tenants are advised to recheck the measurements