



exceptional service as standard.

01494 939868

lettings@kingshills.co.uk

kingshills.co.uk



28 Holmer Green Road | Hazlemere | High Wycombe | HP15 7BL

£1,395 pcm

Property Description

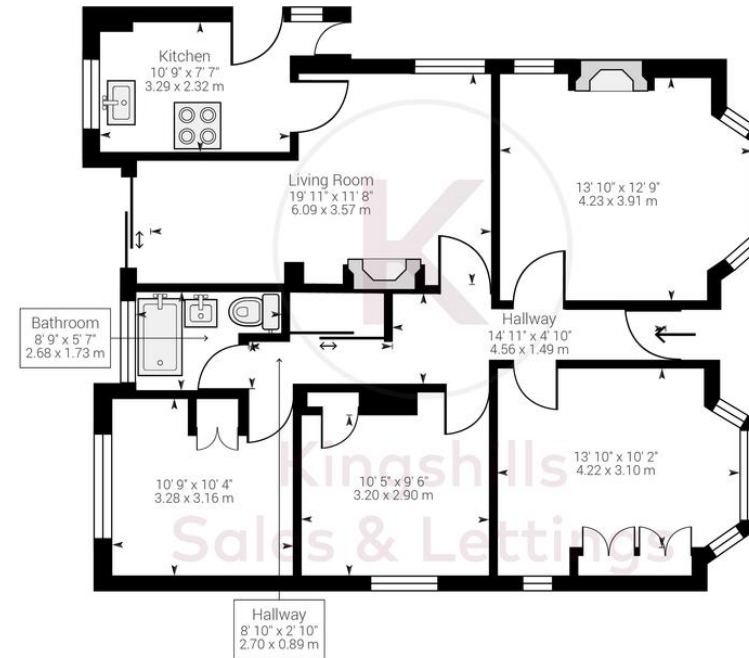
A detached three-bedroom bungalow located in the sought-after village of Hazlemere, offering convenient access to local amenities. The bungalow offers spacious accommodation and further benefits from a large rear garden, driveway, and a garage. The accommodation offers; entrance, living area, three double bedrooms, bathroom, 2nd reception room and kitchen. Offered to the market unfurnished.

COUNCIL TAX

Band E

EPC RATING

D



While every attempt has been made to ensure accuracy, all measurements are approximate, not to scale. This floor plan is for illustrative purpose only and should be used as such by any prospective tenant or purchaser.

Powered by Giraffe360

Aston Court
Kingsmead Business Park
High Wycombe
Buckinghamshire
HP11 1JU

01494 939868
lettings@kingshills.co.uk
kingshills.co.uk

Agents Note: Whilst every care has been taken to prepare these particulars, they are for guidance purposes only. All measurements are for general guidance purposes only and whilst every care has been taken to ensure accuracy, they should not be relied upon and potential buyers/tenants are advised to recheck the measurements