



exceptional service as standard

01494 939 868

lettings@kingshills.co.uk

kingshills.co.uk



42 Wellfield | Hazlemere | High Wycombe | HP15 7TL

£1,250 pcm

Property Features

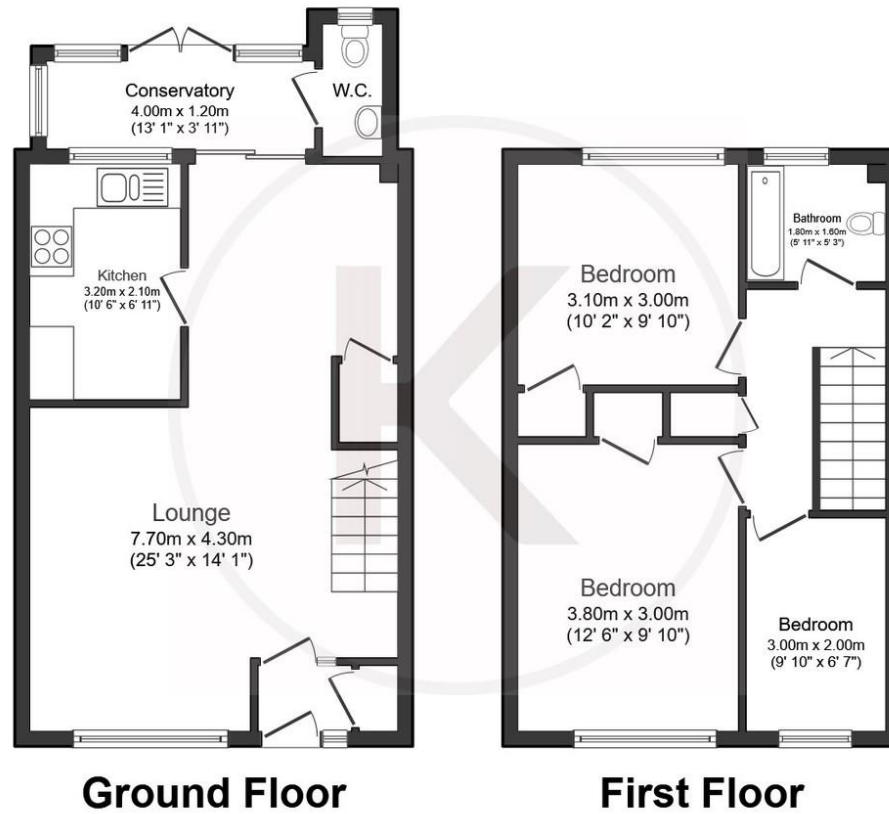
- Three Bedroom House
- Sought-After Location
- Modern Fitted Kitchen
- Close to Local Amenities
- Large Open Plan Living/Dining Room
- Garage to Rear
- Walking Distance to Local Schools
- Well Presented Throughout
- Unfurnished
- Available from Early December

Full Description

A mid-terraced three-bedroom home located on the popular Manor Farm development, within catchment of the popular Manor Farm Schools close to Rose Avenue Park and local amenities. The accommodation comprises: entrance; large open plan living/dining area; modern fitted kitchen with an integrated fridge freezer and dishwasher; conservatory with access to the garden and WC. Upstairs offers two double bedrooms, a further single bedroom and family bathroom. The loft is accessible via a pulldown ladder. The property offers an easy to maintain garden and garage to the rear. The property also benefits from double glazing and gas radiator heating. Viewing strongly recommended. Available from early December on an unfurnished basis. EPC EER Rating C.







This floor plan is for illustrative purposes only. It is not drawn to scale. Any measurements, floor areas (including any total floor area), openings and orientation are approximate. No details are guaranteed, they cannot be relied upon for any purpose and they do not form part of any agreement. No liability is taken for any error, omission or misstatement. A party must rely upon its own inspection(s). Plan produced for Kingshills Estates. Powered by www.focalagent.com

Aston Court
Kingsmead Business Park
High Wycombe
Buckinghamshire
HP11 1JU

01494 939 868
lettings@kingshills.co.uk
kingshills.co.uk

Agents Note: Whilst every care has been taken to prepare these particulars, they are for guidance purposes only. All measurements are for general guidance purposes only and whilst every care has been taken to ensure accuracy, they should not be relied upon and potential buyers/tenants are advised to recheck the measurements