



exceptional service as standard.

01494 939868

hello@kingshills.co.uk

kingshills.co.uk



Ambassador Court | West Wycombe Road | High Wycombe | HP12 3AL

Asking Price Of | £230,000

---

## Property Description

One of only two remaining properties within this superb development of one and two bedroom apartments. The remaining properties are priced competitively so do not miss out. The apartments are ideal for First Time Buyers and Investors as they are within a short distance to High Wycombe town centre.

This apartment is situated on the ground floor and comes with its own private terrace, benefitting from open plan living space, high ceilings and large windows making this apartment exceptionally light and airy.

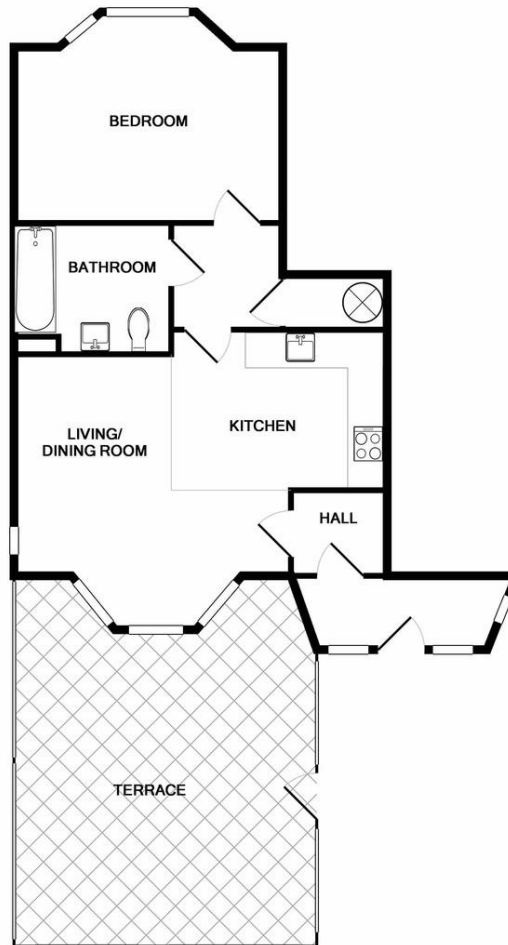
The accommodation comprises; good sized double bedroom, open plan living room and kitchen, separate entrance hall with plenty of storage. Stunning modern bathroom, secured parking to the rear with coded electric gates.

### TENURE

Leasehold

### EPC RATING

C



Whilst every attempt has been made to ensure the accuracy of the floor plan contained here, measurements of doors, windows, rooms and any other items are approximate and no responsibility is taken for any error, omission, or mis-statement. This plan is for illustrative purposes only and should be used as such by any prospective purchaser. The services, systems and appliances shown have not been tested and no guarantee as to their operability or efficiency can be given  
Made with Metropix ©2019

Aston Court  
Kingsmead Business Park  
High Wycombe  
Buckinghamshire  
HP11 1JU

01494 939868  
hello@kingshills.co.uk  
kingshills.co.uk

Agents Note: Whilst every care has been taken to prepare these particulars, they are for guidance purposes only. All measurements are for general guidance purposes only and whilst every care has been taken to ensure accuracy, they should not be relied upon and potential buyers/tenants are advised to recheck the measurements