

exceptional service as standard.

01494 939868

hello@kingshills.co.uk

kingshills.co.uk



12 Ashfield Way | Hazlemere | High Wycombe | HP15 7TH

Asking Price Of | £344,950

Property Features

- ** REDUCED FOR A QUICK SALE**
- Freehold End Terrace Home
- Large Living/Dining Room
- 3 Bedrooms
- Family Bathroom
- Catchment of popular local schools
- Double Glazing
- Gas Radiator Heating
- Garage and Driveway
- EPC Rating D

Full Description

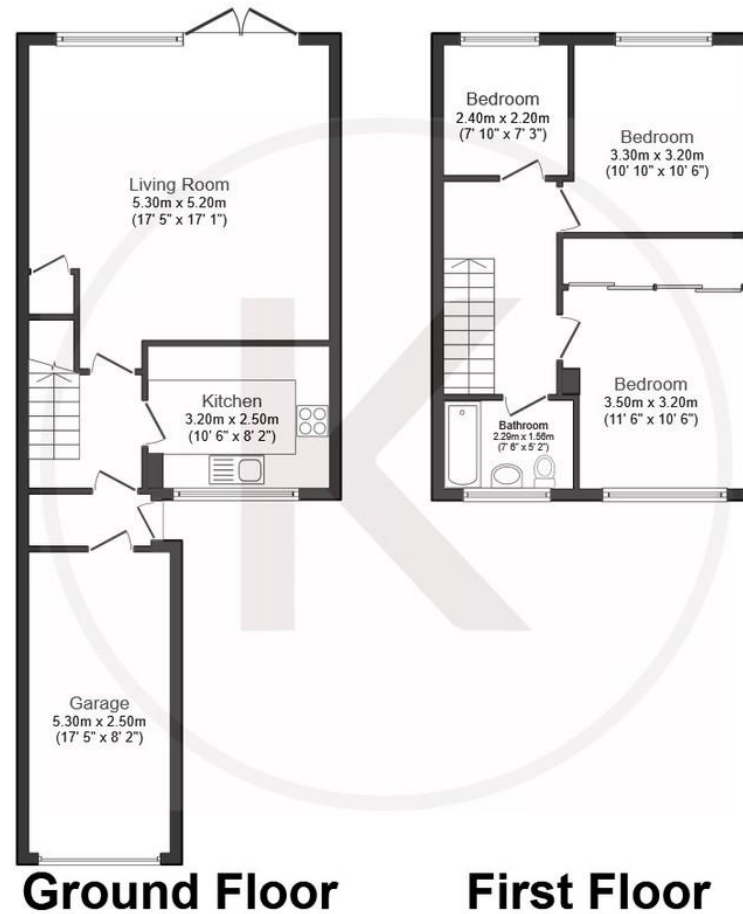
An end of terraced home located on the popular Manor Farm development and within catchment of the popular manor farm schools. This particular design is rarely available as there are only a few built on the development as a whole. The owners have recently acquired the freehold of the house* and are now keen to secure a sale in the coming months. The accommodation comprises: Kitchen to the front, Large living/dining room to the rear with large patio doors leading on to the garden, access via the house to the garage. There are 3 bedrooms and a family bathroom to the first floor. The property also benefits from double glazing and gas radiator heating and boiler replaced in November 2019.

*Whilst the owners have acquired the freehold of the house, the driveway and front garden remain on leasehold, the maintenance charge covers periodic maintenance to the driveway and grass cutting to the front lawn. Maintenance charge is £100.

Under the 1979 Estate Agents Act we are obliged to inform all potential purchasers that the owners of this property are related to an employee of Kingshills Estate Agents.







This floor plan is for illustrative purposes only. It is not drawn to scale. Any measurements, floor areas (including any total floor area), openings and orientation are approximate. No details are guaranteed, they cannot be relied upon for any purpose and they do not form part of any agreement. No liability is taken for any error, omission or misstatement. A party must rely upon its own inspection(s). Plan produced for Kingshills Estates. Powered by www.focalagent.com

Aston Court
Kingsmead Business Park
High Wycombe
Buckinghamshire
HP11 1JU

01494 939868
hello@kingshills.co.uk
kingshills.co.uk

Agents Note: Whilst every care has been taken to prepare these particulars, they are for guidance purposes only. All measurements are for general guidance purposes only and whilst every care has been taken to ensure accuracy, they should not be relied upon and potential buyers/tenants are advised to recheck the measurements