



**19 Hatherley Crescent, Sidcup, Kent, DA14 4JA**  
**£1,275 pcm**



# Hatherley Crescent

Sidcup, DA14 4JA

## VIDEO TOUR AVAILABLE

A stunning two-bedroom first floor maisonette In a sought after location: UNFURNISHED

### Main Features

- MODERN KITCHEN
- RECENTLY REFURBISHED THROUGHOUT
- DOUBLE GLAZING
- PRIVATE GARDEN
- GARAGE
- ACCESS TO GARAGE THROUGH GARDEN
- NEW CARPETS
- SPACIOUS LOUNGE

### Brief Description

A recently refurbished and well proportioned two-bedroom first floor maisonette. Situated in a popular residential road and close to all local amenities including: shops, schools, high street, bus routes and within walking distance of Sidcup mainline railway station.

The property benefits from electric heating, double glazing, and a neutral decor throughout. The accommodation comprises: Own entrance door. Entrance hallway with large storage cupboards. Spacious living room with window to front. 1 x double and 1 x single size bedrooms. Recently refurbished kitchen with a range of wall and base units, work surfaces, stainless steel sink, space for a

washing machine, dish washer and tumble dryer. Tiled bathroom with hand basin, bath with over bath shower and W.C.

Externally there is a private rear garden and a garage en bloc providing off street parking which can be accessed via the rear garden.

### Lounge/diner

14' 0" x 10' 0" (4.27m x 3.05m)

### Bathroom

### Kitchen

10' 2" x 7' 0" (3.1m x 2.13m)

### Bedroom one

13' 11" x 10' 0" (4.24m x 3.05m)

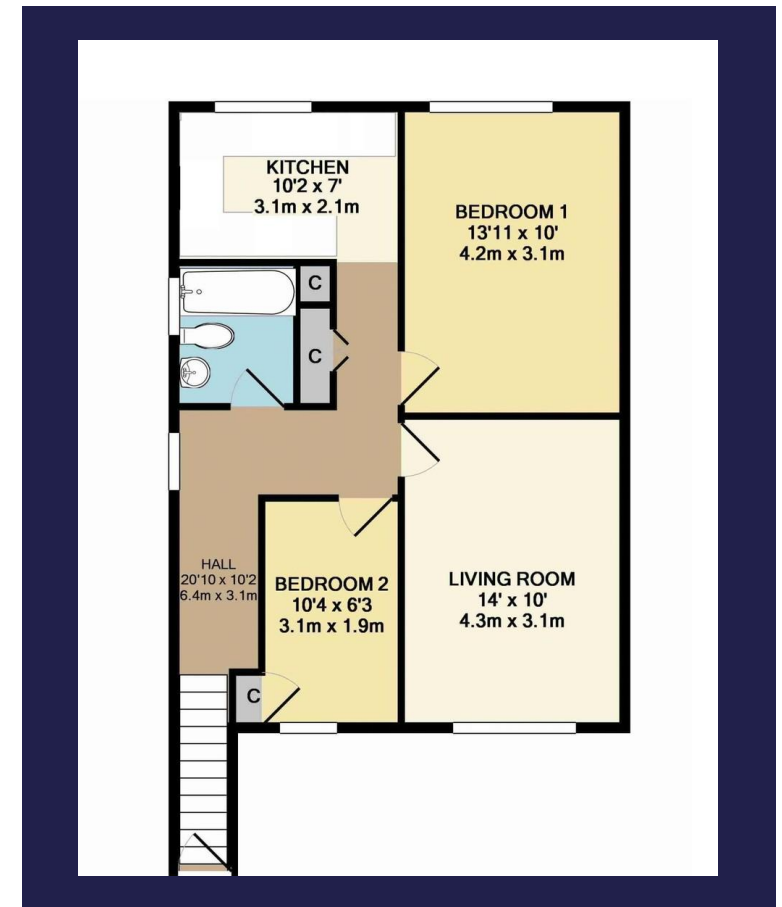
### Bedroom two

10' 4" x 6' 3" (3.15m x 1.91m)

### Garage

### Energy Efficiency Rating

Score	Energy rating	Current	Potential
92+	A		
81-91	B		
69-80	C	69   c	77   c
55-68	D		
39-54	E		
21-38	F		
1-20	G		



128, Station Road, Sidcup, DA15 7AF

Tel: 020 8269 6600

E: info@drewery.co.uk www.drewery.co.uk



These particulars are intended to give a fair description of the property but their accuracy cannot be guaranteed. Intending tenants should not rely on them as statements of representation of fact, but must satisfy themselves by inspection or otherwise as to their accuracy. All measurements quoted are approximate. None of the appliance/services have been tested by ourselves.

\*Important – Admin fees apply per applicant. Please visit our website [www.drewery.co.uk](http://www.drewery.co.uk) (information for tenants – Fees & other costs) or contact our staff.