

£1,150 pcm

Manor Road, Sidcup, Kent, DA15 7HX



- **SPACIOUS & WELL MAINTAINED TOP FLOOR VICTORIAN CONVERSION APARTMENT**
- **GAS CENTRAL HEATING & DOUBLE GLAZING**
- **SPACIOUS LIVING ROOM WITH WINDOWS OFFERING LOVELY VIEWS**
- **MODERN KITCHEN WITH A RANGE OF WALL & BASE UNITS**
- **LARGE BEDROOM WITH BUILT IN STORAGE**
- **MODERN BATHROOM WITH OVER BATH SHOWER**
- **COMMUNAL GARDENS & ALLOCATED PARKING TO REAR**

To view all our homes: www.drewery.co.uk





SPACIOUS & WELL MAINTAINED TOP FLOOR VICTORIAN CONVERSION APARTMENT: PART FURNISHED

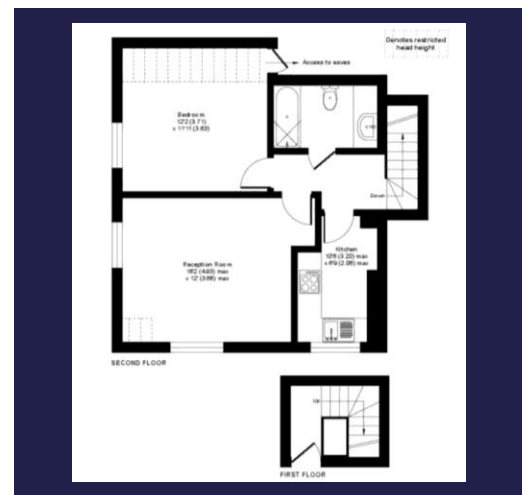
A spacious and well presented top floor Victorian conversion apartment. Situated in a popular residential location and close to all local amenities including: shops, high street, motorway links, bus routes and within a short walk of Sidcup mainline railway station.

The property benefits from gas central heating, double glazing, entry phone system and a neutral decor throughout.

The accommodation comprises: Entrance hallway. Spacious living room with large double glazed window to rear offering idyllic views. Modern kitchen with a range of wall and base units, work surfaces, stainless steel sink with drainer, oven, hob and extractor. A large bedroom with plenty of built in storage. Modern bathroom with hand basin, bath with over bath shower and W.C. . Externally there are communal gardens and 1 x allocated parking space to the rear with extra visitor bays as well.

Available end July.

Restrictions: no pets, smokers, students or sharers.



Energy Efficiency Rating C.
(75/75) EIR 0/0

If you would like to view please contact Drewery Property Consultants on 020 8269 6600

These particulars are intended to give a fair description of the property but their accuracy cannot be guaranteed. Intending tenants should not rely on them as statements of representation of fact, but must satisfy themselves by inspection or otherwise as to their accuracy. All measurements quoted are approximate. None of the appliances/services have been tested by ourselves.

*Important - Admin fees apply per applicant. Please visit our website www.drewery.co.uk (information for tenants - Fees & other costs) or contact our staff.