



DRAFT ISSUED FOR COMMENT
www.resolution-studios.co.uk

127 Northfield Road
Dudley
DY2 9ET

Price £174,950

****Reserve Today - Available On 'Help To Buy'!**** These modern semi detached town houses have been designed for family living, and offer great living space over three floors.

Description

A quality semi detached house available on 'help to buy' at this hugely convenient location sandwiched in between Cradley and Tipton train stations, junction 2 of the M5, bus stops and primary and nursery schools near by. The houses are under construction by Simply Properties Ltd to their usual high standards. This property comes with an architects certificate. A show home is expected to be complete by Aug/September 2019.

Inside, the finish is superb with focus on quality. The kitchens having a range of wall and base units with integrated oven, hob, dishwasher, fridge freezer and washer dryer, W/C cloakroom off, excellent living room to the rear, three generous bedrooms over two floors with master bedroom having an en suite and dressing room, excellent contemporary design house bathroom. Private rear garden and parking for two cars to the rear, whats not to love!

A perfect first home, up size for those starting a family, or ideal investment providing an estimated monthly return of £750 PCM (giving a gross yield of 5.1% based on asking price offer)

Hallway

Kitchen 11' 1" x 10' 5" (3.4 x 3.2)

To include

Living Room 19' 0" x 13' 1" (5.8 x 4.0)

Down Stairs W/C

LLWC, wash hand basin

Bed 1 (Rear) 13' 1" x 11' 9" (4.0 x 3.6)

Wardrobes

Bathroom

Bath, LLWC, Wash hand basin

Bed 2 (Front) 13' 1" x 11' 9" (4.0 x 3.6)

Wardrobes

Master Bedroom

MEASUREMENTS TBC

En-Suite

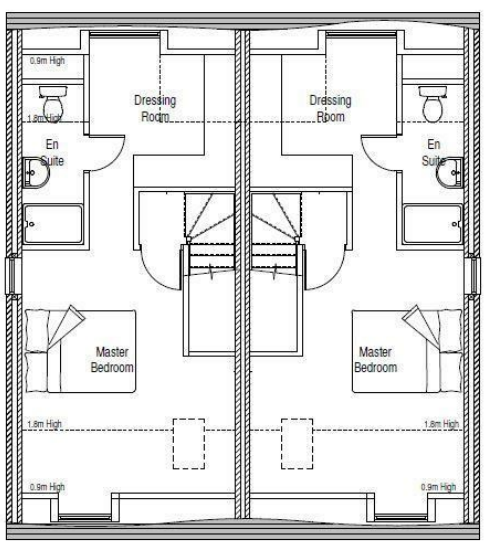
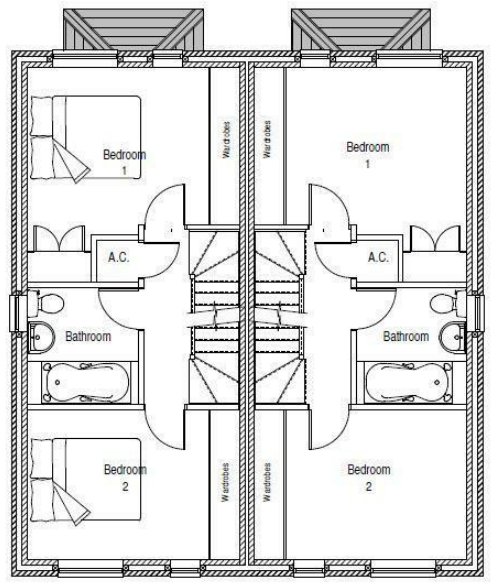
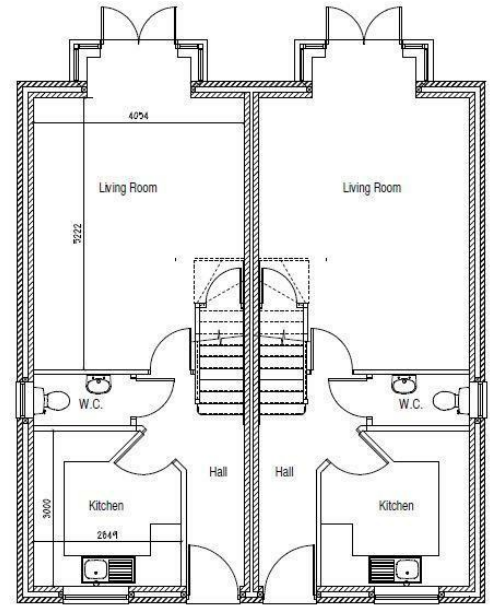
Shower, LLWC, wash hand basin

Rear Garden

Outside

AGENTS NOTE

ALL MEASUREMENTS ARE APPROXIMATIONS
FINAL SPECIFICATION TO BE CONFIRMED
ANNUAL SERVICE CHARGE PAYABLE FOR THE MAINTENANCE OF THE REAR OF THE DEVELOPMENT - MORE DETAILS ON THIS TO FOLLOW



Lex Allan Grove - Land & New Homes

129 Worcester Road Hagley
Worcestershire DY9 0NN
Land & New Homes: 01562 270072
e-mail: lnh@lexallangrove.com

www.lexallangrove.com



Registered in England No. 05895523