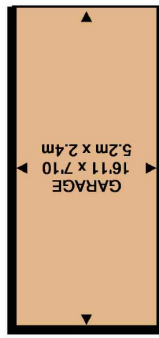
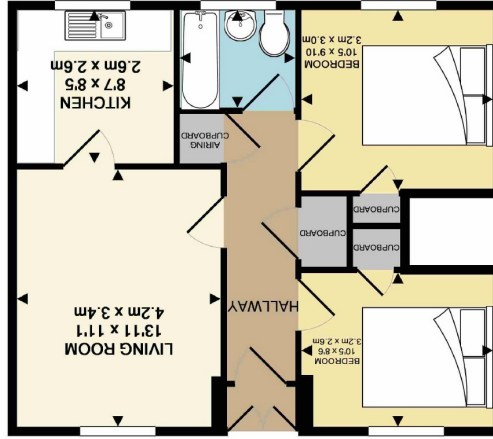




72 DARWIN ROAD, BRIDLINGTON, YO16 6FZ
 TOTAL APPROX. FLOOR AREA 675 SQ.FT. (62.7 SQ.M.)
 Whilst every attempt has been made to ensure the accuracy of the floor plan contained here, measurements of doors, windows, rooms and any other items are approximate and no responsibility is taken for any error, omission, or mis-statement. This plan is for illustrative purposes only and should not be used as such by any prospective purchaser. The services, systems and appliances shown have not been tested and no guarantee as to their operability or efficiency can be given.
 Made with Metropix ©2019



72 Darwin Road
 Bridlington YO16 6FZ

Harris Shields
 Collection

Harris Shields Collection

14 Promenade, Bridlington, East
Yorkshire, YO15 2PX

01262 601 704
estateagents@harrisbell.com
www.harrisbell.com

- ✓ Ground Floor Flat.
- ✓ 2 Bedrooms.
- ✓ Living Room.
- ✓ Fitted Kitchen.
- ✓ Combined Bathroom / WC.
- ✓ Gas Central Heating.
- ✓ UPVc Double Glazing.
- ✓ Garage.

£92,995 Leasehold

Description

GROUND FLOOR TWO BEDROOM FLAT.....

2 BEDROOM APARTMENT....GROUND FLOOR.

This ground floor, leasehold apartment, which was built c1982 by Stepney's Builders benefits from Gas Central Heating and UPVc Double Glazing and briefly comprises: Porch, Hallway, Living Room, Fitted Kitchen, 2 Bedrooms and combined Bathroom /WC. There are communal Gardens and a private Garage.

The apartment is part of a private development of similar units held under a management scheme in the name of North Lea Flats Association and is managed by Harris Shields Collection. Annual maintenance charge for 2019 /2020 is £600 which includes the ground rent.

Darwin Road is located on the northern side of Bridlington, approximately 2 miles from the Town Centre with a supermarket and a parade of shops close by. There is a bus service into the town centre.

Additional Information

Council Tax Band A.



Opening doors
for over 60 years

Harris Shields
Collection