



18 Prince Street
Bridlington YO15 2NP

Harris Shields
Collection

Harris Shields Collection

14 Promenade, Bridlington, East
Yorkshire, YO15 2PX

01262 601 704
estateagents@harrisbell.com
www.harrisbell.com

- ✓ Town Centre Freehold.
- ✓ For Sale or To Let.
- ✓ A1 User.
- ✓ Superb Location.
- ✓ Overlooking Harbour.
- ✓ Some Updating Required.
- ✓ Potential for Development.
- ✓ Freehold £300,000.

£300,000 Freehold

Description

FOR SALE or TO LET

Occupying arguably one of the best locations in Bridlington Town Centre overlooking the Harbour and the North Beach this 4 storey end terraced property is offered For Sale at an asking price of £300,000 or To Let on a new lease with an initial rent of £25,000 per annum exclusive. Currently the premises have A1 use and utilised as a gift / novelty shop however they may suit a variety of trades, subject to the relevant permissions being granted.

The sales area consists of: Ground Floor and Lower Level rooms with internal staircase - the windows to the gable end overlook the sea; the First Floor and Second Floor rooms are utilised as stock rooms but may convert to create owner's accommodation or self contained flats - again subject to the relevant permissions being granted.

** It is worth noting that the external concrete steps to the Harbour are owned by the subject property.**
These FREEHOLD PROPERTIES rarely come to the market therefore early viewing is highly recommended.

Additional Information

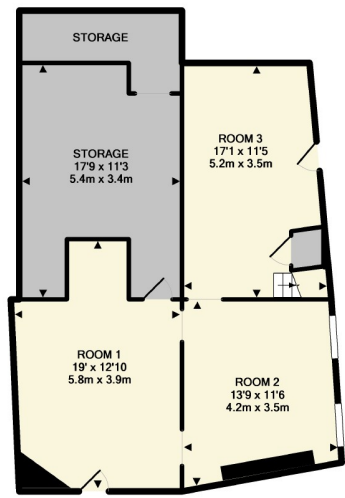
Please note: Our Floorplan is for guidance purposes only -the measurements are approximate and should not be relied on.



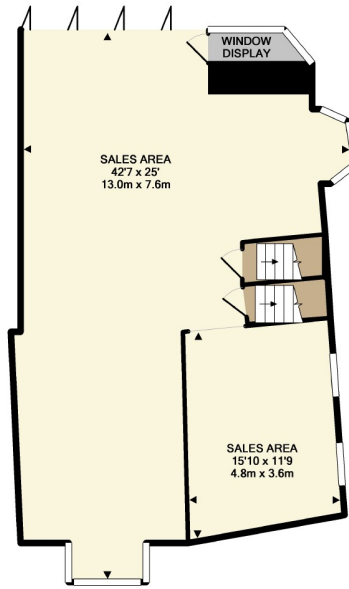


**Opening doors
for over 60 years**

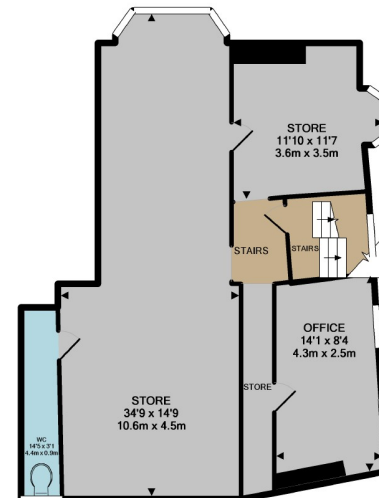
**Harris Shields
Collection**



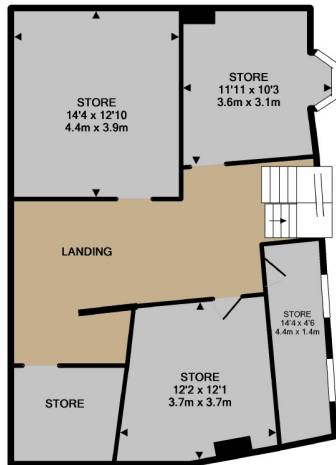
LOWER LEVEL
APPROX. FLOOR
AREA 772 SQ.FT.
(71.8 SQ.M.)



GROUND FLOOR
APPROX. FLOOR
AREA 891 SQ.FT.
(83.1 SQ.M.)



1ST FLOOR
APPROX. FLOOR
AREA 786 SQ.FT.
(74.0 SQ.M.)



2ND FLOOR
APPROX. FLOOR
AREA 790 SQ.FT.
(73.4 SQ.M.)

18 PRINCE STREET, BRIDLINGTON, YO15 2MP
TOTAL APPROX. FLOOR AREA 3253 SQ.FT. (302.2 SQ.M.)
Whilst every attempt has been made to ensure the accuracy of the floor plan contained here, measurements of doors, windows, rooms and any other items are approximate and no responsibility is taken for any error, omission, or mis-statement. This plan is for illustrative purposes only and should be used as such by any prospective purchaser. The services, systems and appliances shown have not been tested and no guarantee as to their operability or efficiency can be given.
Made with Metropac ©2017

You may download, store and use the material for your own personal use and research. You may not republish, retransmit, redistribute or otherwise make the material available to any party or make the same available on any website, online service or bulletin board of your own or of any other party or make the same available in hard copy or in any other media without the website owner's express prior written consent. The website owner's copyright must remain on all reproductions of material taken from this website.

