



Ground Floor

Bedroom 2

Bedroom 1

Hallway

Bathroom

Kitchen

Lounge/diner

Ensuite

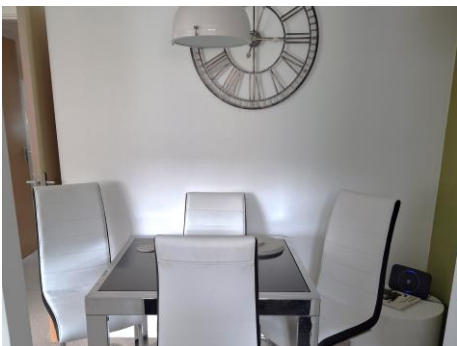
Airing cupboard

Chadwells

While every attempt has been made to ensure the accuracy of the footprint contained here, omission of items, omissions, errors and any other items are approximate and no responsibility is taken for any omissions or misstatements. This plan is for illustrative purposes only and should be used as such by prospective purchasers. The services, systems and appliances shown have not been tested and no guarantee is given for their operability or efficiency can be given.

**Entrance Hall**  
**Lounge/Dining**  
**Kitchen** 7' x 7' 10" (2.13m x 2.39m)  
**Master Bedroom** 9' 4" x 12' 8" (2.84m x 3.86m)  
**En-Suite** 4' 9" x 6' 7" (1.45m x 2.01m)  
**Bedroom Two** 6' 6" x 9' 1" (1.98m x 2.77m)  
**Bathroom** 6' x 6' 10" (1.83m x 2.08m)





**Chadwells**  
Estate & Letting Agents

#### Entrance Hall

- Door to landing area, carpet flooring, loft access, electric storage heater and airing cupboard.

#### Lounge/Dining

- Open plan lounge, kitchen/diner, carpet flooring, window to the front, two electric storage heaters, TV point and archway through to the kitchen. Furniture includes sofa, armchair, dining table and four chairs.

#### Kitchen

- Range of wall and base units, square edged work surfaces, electric hob with extractor above, vinyl flooring and window to the front. Appliances include washing machine, dishwasher and fridge freezer.

#### Master Bedroom

- Carpet flooring, electric storage heater, built in black wardrobe with mirror fronted door, double wooden bed frame and mattress, window to the side and door to the en-suite.

#### En-Suite

- With shower cubicle, low flush WC, hand wash basin, vinyl flooring and part tiled walls.

#### Bedroom Two

- Carpet flooring, wall mounted electric storage heater, black finished single wardrobe with mirror front, two chests of drawers and window to the side.

#### Bathroom

- Three piece panelled bath suite with low flush WC, wash basin, vinyl flooring and partly tiled walls.

#### Outside

- Allocated parking space and gated access.