



Beacon View

Ollerton



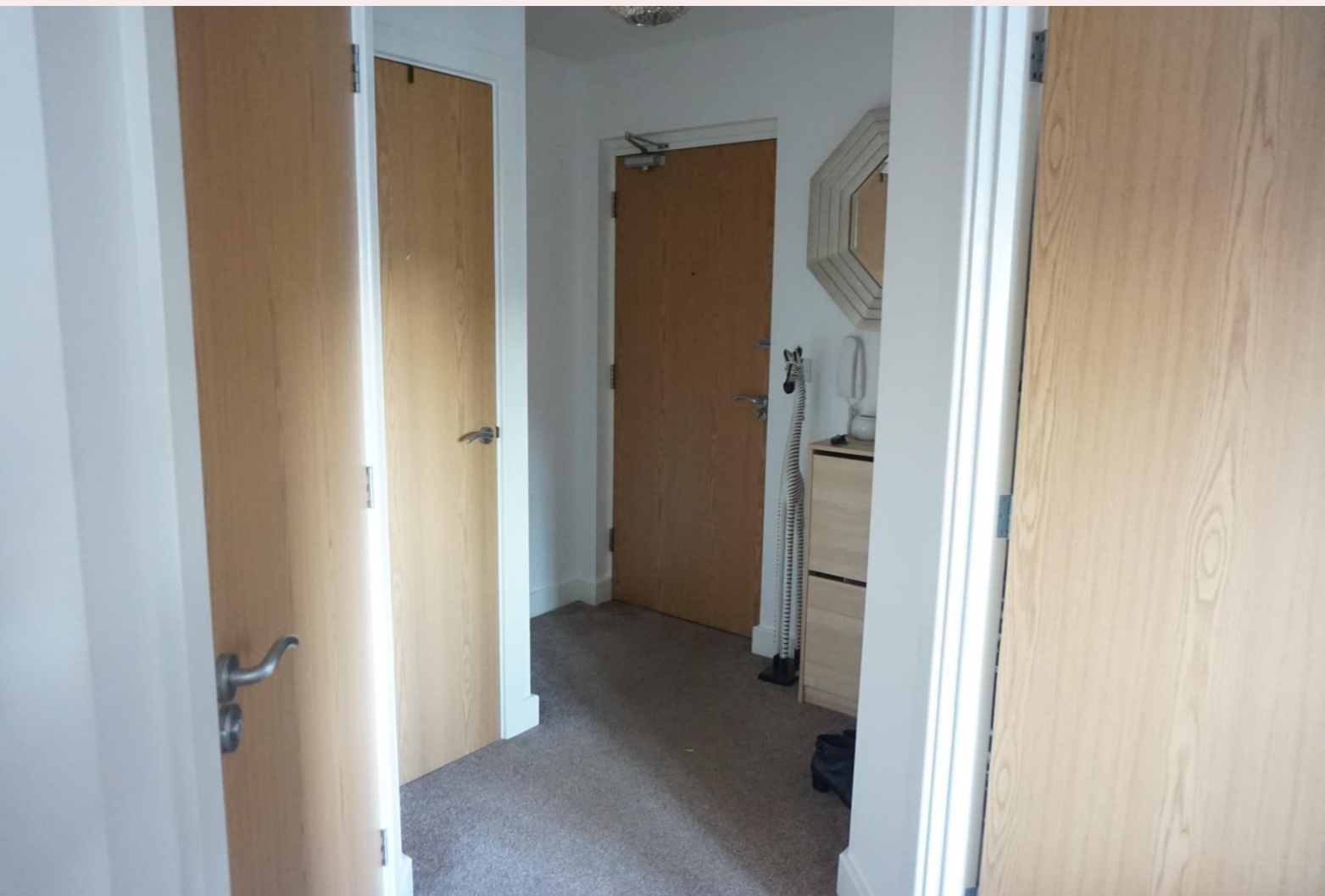
£85,000

Chadwells
Estate & Letting Agents

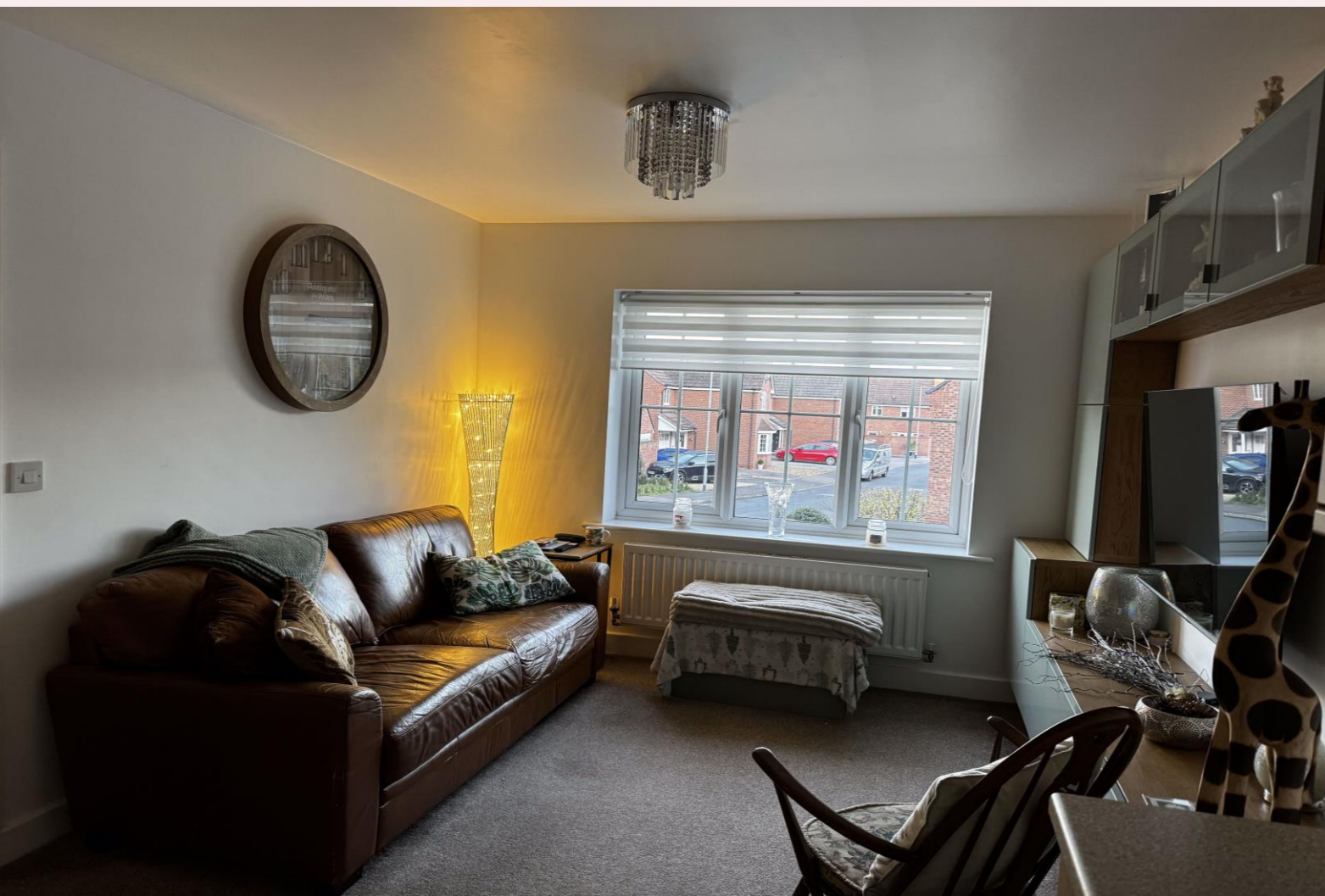


Hillside Court

Hillside Court
10 Hillside Court
Hillside Court



Modern day living at it best....





Beacon View





Welcome

This first floor one bedroom apartment is the ideal investment for someone looking to downsize or as a first time buy! Excellently maintained throughout, the fixtures and fittings are in fantastic condition! The property also benefits from private allocated parking and communal garden. Don't wait...Call the office now and make an appointment.



Step inside...

Entrance Hall

Enter from the communal hallway into the entrance hall. With carpet flooring, radiator, doors leading to the master bedroom, lounge and bathroom. Store cupboard and access to the loft hatch that allows access to private loft space. Loft has a fitted ladder and boarded.

Lounge 11' 9" x 10' 1" (3.58m x 3.07m)

The lounge has carpet flooring, radiator, TV, BT and satellite points. Open plan into the kitchen.

Kitchen 7' 3" x 6' 9" (2.21m x 2.06m)

The kitchen is fitted with wall and base units, square edge work surfaces, integrated electric oven with gas hob and extractor hood above. Integrated washer/dryer and free standing fridge/ freezer. UPVC window to the side aspect and vinyl flooring.

Master Bedroom 13' 1" x 9' 8" (3.98m x 2.94m)

With carpet flooring, radiator and UPVC window to the front aspect.

Bathroom 6' 4" x 6' 3" (1.93m x 1.90m)

The bathroom is fitted with a three piece suite comprising panel bath with mains fed shower and glass screen, hand wash basin and low flush WC. Part tiled walls, vinyl flooring and radiator.

Outside

Allocated parking, communal garden space with beautiful country walks near by.





Total Approx. Floor Area 595 Sq.Ft. (55.3 Sq.M.)

Whilst every attempt has been made to ensure the accuracy of the floor plan contained here, measurements of doors, windows, rooms and any other items are approximate and no responsibility is taken for any error, omission, or mis-statement. This plan is for illustrative purposes only and should be used as such by any prospective purchaser. The services, systems and appliances shown have not been tested and no guarantee as to their operability or efficiency can be given

Made with Metropix ©2019



Selling Homes with Bespoke Lifestyle Photography

Chadwells
Estate & Letting Agents

If you'd like to view this amazing
property, give us a call.

We'd Love To Show You Around!

Telephone: 01623 861 861

**Chadwells**
Estate & Letting Agents