



Goodwill Road

Ollerton

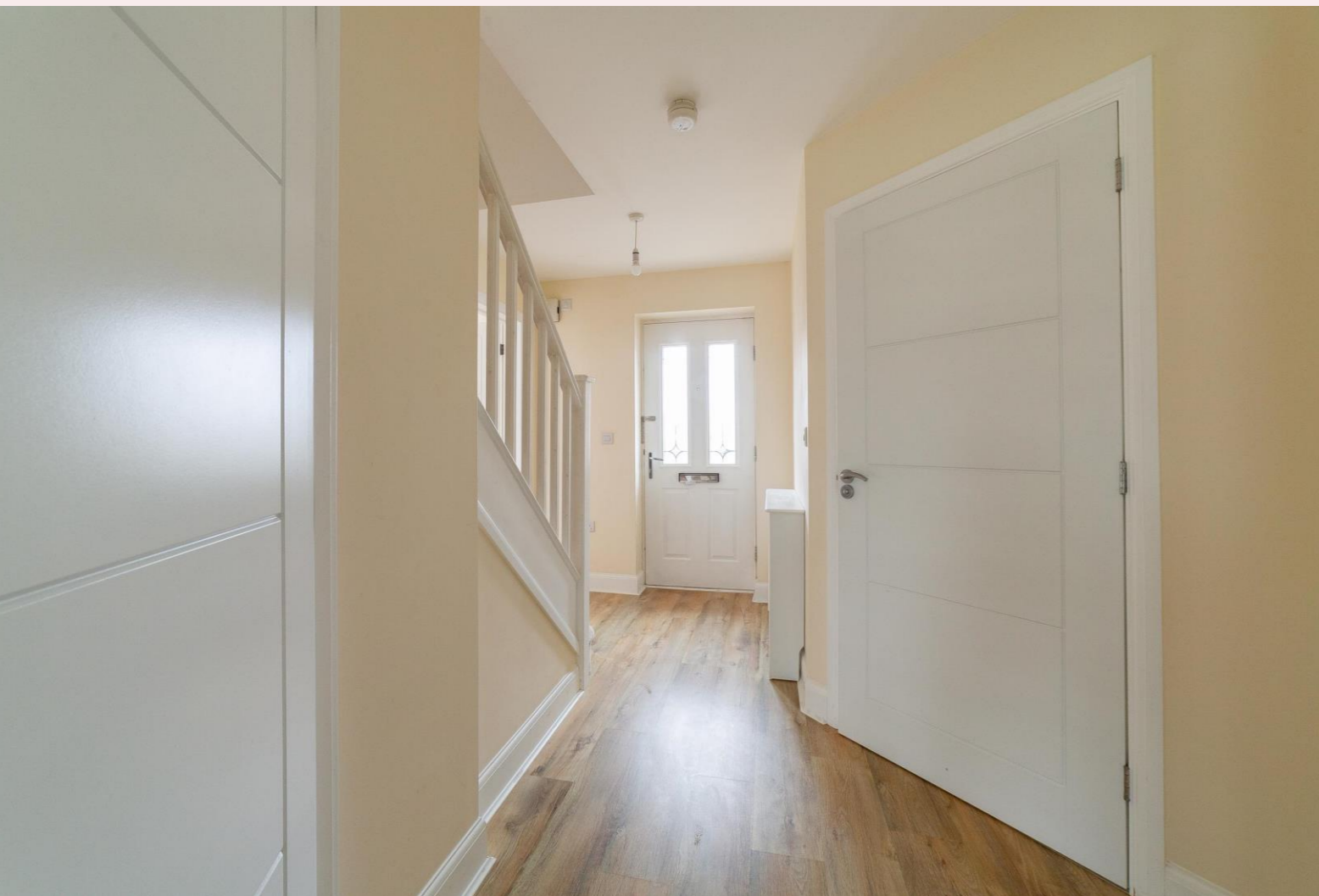


£225,000

Chadwells
Estate & Letting Agents



Chadw
FOR S
Tel: 01623
www.chadw



FOR SALE WITH NO UPWARD
CHAINTAKE A LOOK AND
SEE WHY YOU CAN'T HELP BUT
FALL IN LOVE WITH THIS
ENCHANTING HOME!





Goodwill Road





Welcome

The stunning interior will make you want to move in immediately! Soft greys, gentle pastels and the luxurious finishes are sure to capture your heart. Laminate flooring creates a spacious and uncluttered feel to the welcoming entrance hall which leads effortlessly through impressive double doors to an enviably sized dining kitchen. The cream high gloss base units and wall cupboards reflect the light perfectly in this great space! Stylish French windows seamlessly incorporate the outside area to produce a wonderfully bright and inviting sociable dining space in which to spend time with family and friends. Family time is equally well catered for in the warm and inviting reception lounge. Beautiful French windows provide a bright and airy feel to this harmonious space which is reflected in the timeless neutral colour palette.



Step inside...

Entrance Hallway

With laminate flooring, stairs off to the first floor, radiator, door to the downstairs WC, double doors to the kitchen/diner and door to the lounge.

Downstairs WC

Vinyl flooring, low flush WC, hand wash basin, radiator and obscure window to the side aspect.

Lounge *15' 10" x 10' 11" (4.83m x 3.33m)*

Carpet flooring, uPVC French doors leading to rear garden and patio area. uPVC window to the front aspect, radiator, ceiling light and TV point.

Kitchen/Diner *15' 10" x 11' 0" (4.83m x 3.35m)*

Modern fitted kitchen with a range of wall and base units finished in cream high gloss and grey, vinyl flooring, square edged work surfaces, stainless steel sink and drainer with mixer tap, eye level electric oven, gas hob, integrated fridge freezer, space and plumbing for washing machine and dishwasher, cupboard housing wall mounted gas combi-boiler, under stairs storage cupboard, uPVC French doors to the rear and window to the front aspect.

First Floor Landing

With carpet flooring, loft access and window to the rear with fitted blind.

Master bedroom *14' 9" x 9' 11" (4.50m x 3.02m)*

With carpet flooring, Two uPVC windows to the front aspect, TV point, radiator and door into the ensuite.

En-suite

With vinyl flooring, obscure uPVC window to the front, double shower tray with glass screen, wall mounted electric shower, hand wash basin, low flush WC and radiator.

Bedroom 2 *11' 2" x 8' 5" (3.40m x 2.57m)*

Carpet flooring, uPVC window to the front aspect, storage cupboard and radiator.

Bedroom 3 *7' 10" x 7' 11" (2.39m x 2.41m)*

Carpet flooring, uPVC window to the rear and radiator.

Family Bathroom *6' 7" x 5' 6" (2.01m x 1.68m)*

Three piece white panelled bath suite, vinyl flooring, wash basin, low flush WC and obscure uPVC window to the rear.

Rear Garden

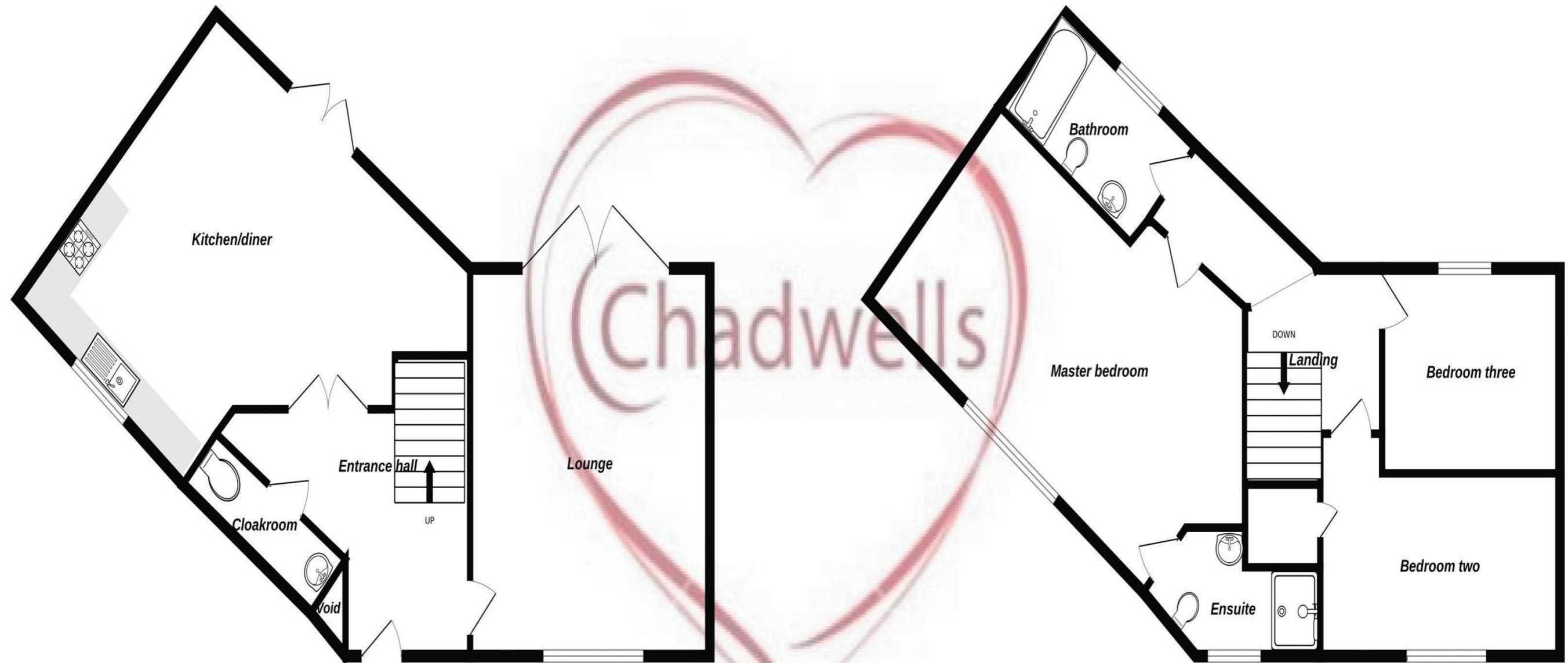
Fully enclosed rear garden with gated access, newly laid Indian sandstone patio area and laid to lawn. Access to garage.

Garage

Attached single garage with metal up and over door, power and lighting, over head beams for additional storage.

Ground Floor

1st Floor



Whilst every attempt has been made to ensure the accuracy of the floorplan contained here, measurements of doors, windows, rooms and any other items are approximate and no responsibility is taken for any error, omission or mis-statement. This plan is for illustrative purposes only and should be used as such by any prospective purchaser. The services, systems and appliances shown have not been tested and no guarantee as to their operability or efficiency can be given.
Made with Metropix ©2024



Selling Homes with Bespoke Lifestyle Photography

Chadwells
Estate & Letting Agents

If you'd like to view this amazing
property, give us a call.

We'd Love To Show You Around!

Telephone: 01623 861 861

 **Chadwells**
Estate & Letting Agents