



South Avenue, Stourbridge

£400,000

Features:

- Terraced house
- Four bedrooms
- Two reception rooms
- Large kitchen/diner and utility
- Modern bathroom and downstairs WC
- Spacious rear garden
- Garage
- EPC - TBC

Description:

A fantastic four bedroom terraced house, ideal for families due to its close proximity to local schooling, parks, shops and amenities. The property in brief: Entrance hall with under-stair storage cupboard, leading to the lounge with feature fireplace. Back through to the large kitchen/diner, which benefits from having space for a range cooker and fridge/freezer. The dining area is generous in size, and has a folding door leading to the rear garden, making it an ideal space for entertaining in the summer. The utility room is accessed via the the dining area and has space for a washer. From the dining area is the sitting room, which offers a storage cupboard, French doors to the rear garden and benefits from skylights which allow for plenty of natural lighting. Back to the entrance hall where the downstairs WC is situated for guests. Upstairs: Bedroom one is extremely generous in size and benefits from having a storage cupboard. Bedroom two sits to the rear of the property and offers ample space, as does the bedroom three at the front of the property, which also benefits from a storage cupboard. Also to the front is the well-sized bedroom four. The family bathroom benefits from both a walk in shower and a bath. Outside: The rear garden has a patio area ideal for garden furniture for entertaining. The large lawn has plenty of space for children's garden toys, and a shed sits to the end. To the front of the property is a driveway space and a garage, which has electrics and a water tap, as well as access to the rear garden. This property is ideally located for families due to its close proximity to excellent primary and secondary schools, as well as sixth forms. Mary Steven's Park is nearby, offering a great outdoor space for children. There are local shops, pubs and amenities nearby, and further shopping facilities can be found in Stourbridge town, including supermarkets. For commuters, the nearby Stourbridge ring road offers access to Birmingham, the M5 and Merry Hill, and Stourbridge Junction is just over one mile away, providing rail links to Birmingham and Worcester.



Details:

Entrance Hall

Lounge

12' 3" x 12' 7" (3.73m x 3.83m)

Kitchen/Diner

12' 4" x 28' 2" (3.76m x 8.58m)

Sitting Room

22' 4" x 8' 3" (6.80m x 2.51m)

Utility

6' 2" x 3' 1" (1.88m x 0.94m)

WC

5' 9" x 3' 1" (1.75m x 0.94m)

Bedroom One

12' 6" x 16' 9" (3.81m x 5.10m)

Bedroom Two

12' 2" x 14' 5" (3.71m x 4.39m)

Bedroom Three

15' 8" x 11' 2" (4.77m x 3.40m)

Bedroom Four

12' 2" x 8' 9" (3.71m x 2.66m)

Bathroom

12' 0" max x 7' 1" (3.65m x 2.16m)

Garage

15' 8" x 10' 8" (4.77m x 3.25m)

EPC Rating:

Council Tax Band: C (tbc by solicitors).

Tenure: Freehold (tbc by solicitors).

For more information or to arrange a viewing, please call us on 01384 319400



How can we help you?

Need a mortgage?

We recommend Morgan Financial Solutions. They will search the market for you to ensure you get the right lender and mortgage deal. They typically achieve mortgage offers much more quickly than if you were dealing with lenders directly. The initial appointment is free and without obligation. Call us on 0121 809 9809, or visit their website for more information: www.morgans.co.uk

Property to sell?

If you need to sell a property in order to buy, you ideally need to be on the market at least (and preferably Sold STC) before viewing, otherwise you may lose out to other buyers when the right property comes along. In these circumstances we can get your property 'live' quickly. Just book a free valuation and we will visit your property and discuss your needs.

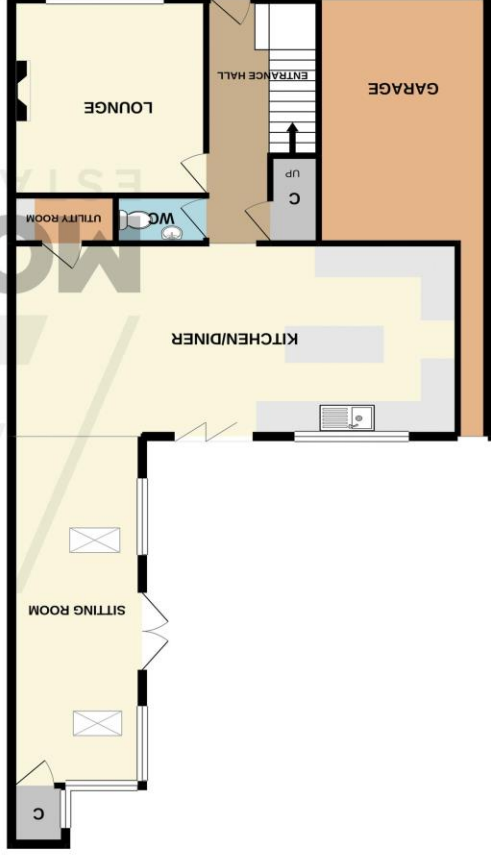
Need a solicitor?

A good solicitor can save you literally weeks of time in the buying/selling process, reducing the stress levels of all involved. We will instruct a reputable firm that is competitive on cost and very reliable. Just ask for a quote.

Need a removal company and storage?

A professional removal company takes the stress out of moving. Knowing that your belongings are safe and insured far outweighs any small savings by trying to do it yourself or using a man-and-a-van service. We work closely with and recommend Cube Removals as the leading local firm. For peace of mind and a reliable service call them on 0800 193 0000 or visit their website, cuberemovals.co.uk, to arrange a survey.

GROUND FLOOR
1034 sq.ft. (96.0 sq.m.) approx.



1ST FLOOR
861 sq.ft. (80.0 sq.m.) approx.



What every attempt has been made to ensure the accuracy of the floorplan contained here. Measurements of doors, windows, rooms and any other items are approximate and no responsibility is taken for any error, omission or mis-statement. This plan is for illustrative purposes only and should not be used as such by any prospective purchaser. The services, systems and appliances shown have not been tested and no guarantee as to their operability or efficiency can be given.
Made with Metropix ©2020

No statement in these details is to be relied upon as representation of fact, and purchasers should satisfy themselves by inspection or otherwise as to the accuracy of the statements contained within. These details do not constitute any part of any offer or contract. AP Morgan and their employees and agents do not have any authority to give any warranty or representation whatsoever in respect of this property. These details and all statements herein are provided without any responsibility on the part of AP Morgan or the vendors. Equipment: AP Morgan has not tested the equipment or central heating system mentioned in these particulars and the purchasers are advised to satisfy themselves as to the working order and condition. Measurements: Great care is taken when measuring, but measurements should not be relied upon for ordering carpets, equipment, etc. The Laws of Copyright protect this material. AP Morgan is the Owner of the copyright. This property sheet forms part of our database and is protected by the database right and copyright laws. No unauthorised copying or distribution without permission.